



5580 Enterprise Pkwy.  
Fort Myers, FL 33905

Office: 239-694-0089  
Fax: 239-694-0031

[www.mcscontrols.com](http://www.mcscontrols.com)

# MCS-MODBUS-I/O

## Software Update Procedure & Wiring



*The MCS-MODBUS-I/O gives the MCS-MAGNUM the ability to act as a Modbus Master using the Modbus RTU Protocol. This allows the MCS-MAGNUM to communicate to Modbus slave devices (such as Variable Frequency Drives, Compressors, etc.) to send and access parameters.*

**MCS Total  
Solution  
for all your  
Control  
Needs**



**Energy Efficient and RoHS Compliant**

Rev-2015-09-28

**Revision/Disclaimer Page**

<b>Date</b>	<b>Author</b>	<b>Description of Changes</b>
2015--03-17	DEW	Restructured manual
2015-09-28	DEW	Update photo

**The MCS Commitment is to provide practical solutions for the industries needs and to be both a leader and partner in the effective use of microprocessor controls.**

Micro Control Systems, Inc.  
5580 Enterprise Parkway  
Fort Myers, Florida 33905  
PH:(239) 694-0089 FAX:(239) 694-0031  
[www.mcscontrols.com](http://www.mcscontrols.com)

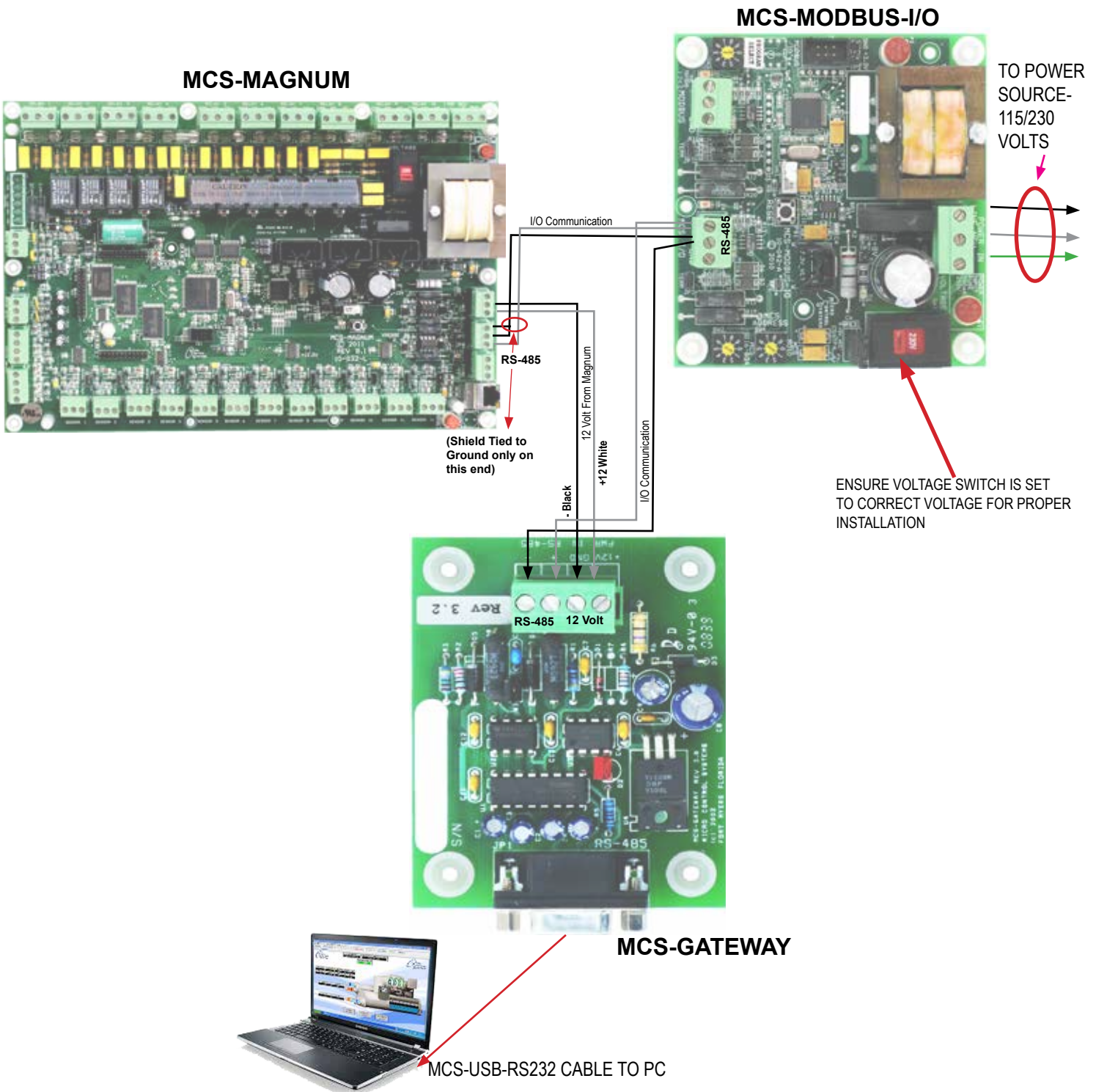
All information contained within this document is considered to be proprietary information of Micro Control Systems, Inc. No information or data from this document shall be published, used, reproduced, transmitted, or disclosed to others outside your organization without the prior expressed written consent of Micro Control Systems, Inc. This document and the information contained herein shall be treated as proprietary. Reasonable provisions shall be provided to ensure that this information remains proprietary by your employees, agents, and other personnel that may have access to this document. Copyright ©2015

# Wiring to MCS-GATEWAY & Power Source

Wire MCS-MAGNUM I/O Communication to MCS-MODBUS and than to MCS-GATEWAY as shown in diagram below.

Wire 12 volt power supply from MCS-MAGNUM to MCS-GATEWAY.

For communication to PC, use a MCS-USB-RS232 cable from MCS-GATEWAY TO USB port on PC.



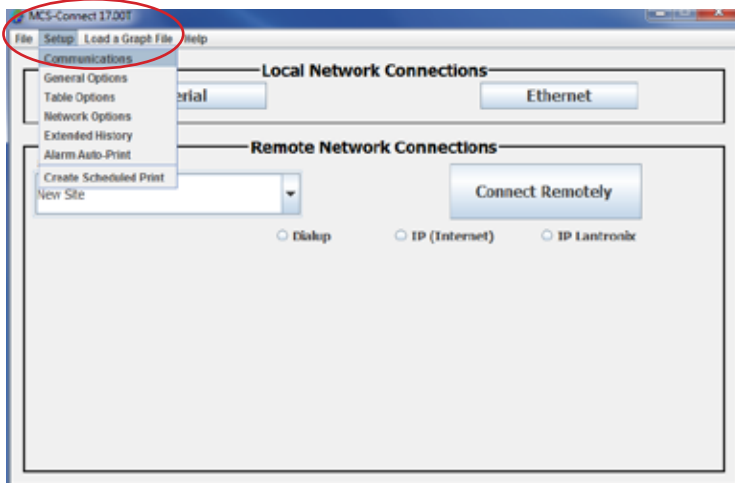
# Software Installation

After the system is wired and connected:

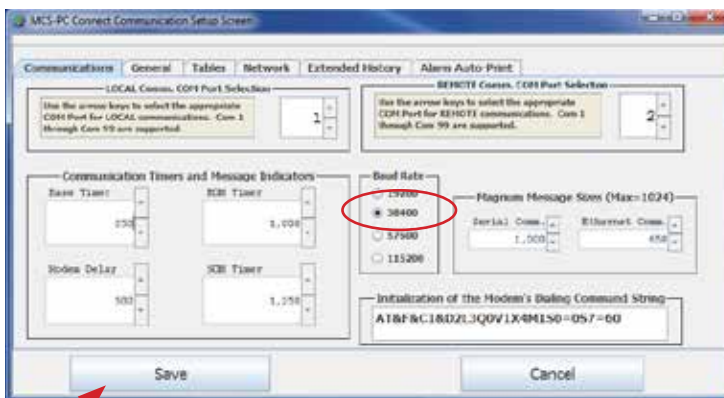
- 1) Open MCS-Connect



- 2) Click on **Setup**, then click on **Communications**

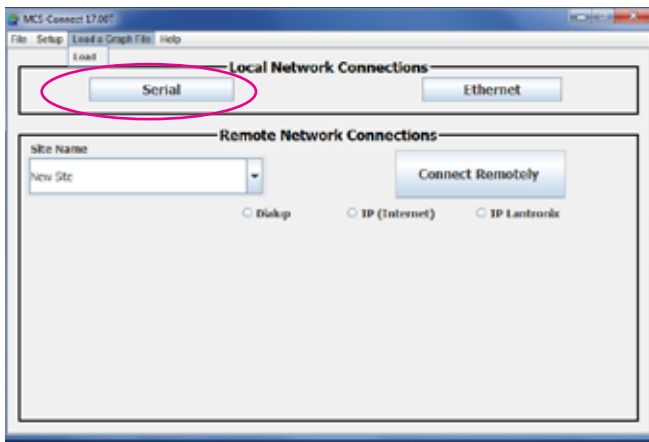


- 3) On the setup screen, ensure your LOCAL Comm. COM Port Selection is set up to the correct port. Change the Baud Rate to 38400.

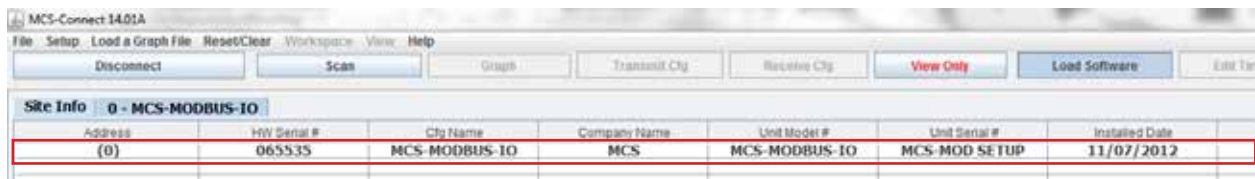


- 4) Click Save once you have made your changes.

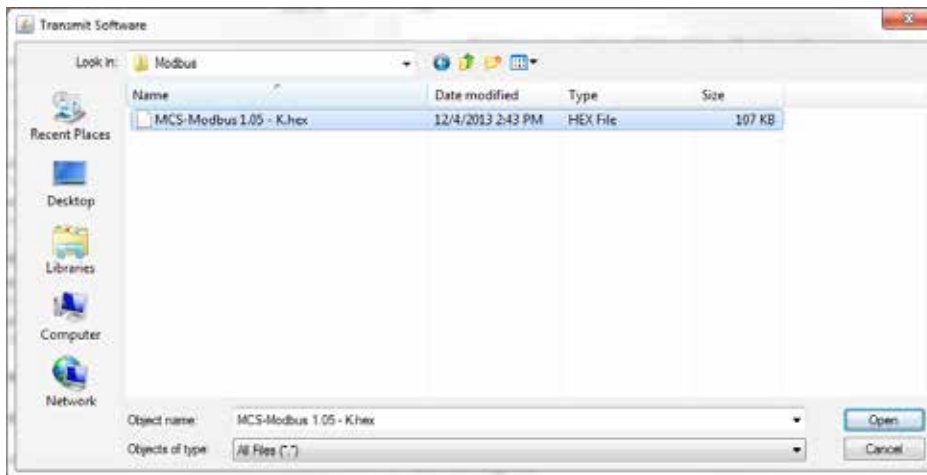
- 5) Back in the main screen, click Serial.



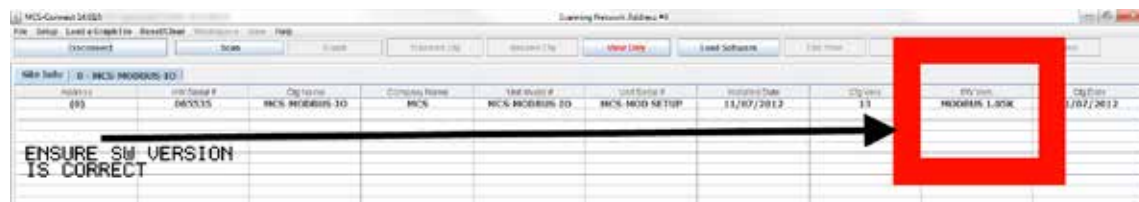
- 6) Once the MCS-MODBUS-IO shows up, click on Load Software.



- 3) Browse to and select your hex file and click Open.



- 4) Wait for MCS-Connect to finish transmitting the software then ensure that software version is correct.





*Providing HVAC/R Control Solutions Worldwide*

5580 Enterprise Pkwy. Fort Myers, FL 33905

Office: (239) 694-0089

Fax: (239) 694-0031

[www.mcsccontrols.com](http://www.mcsccontrols.com)